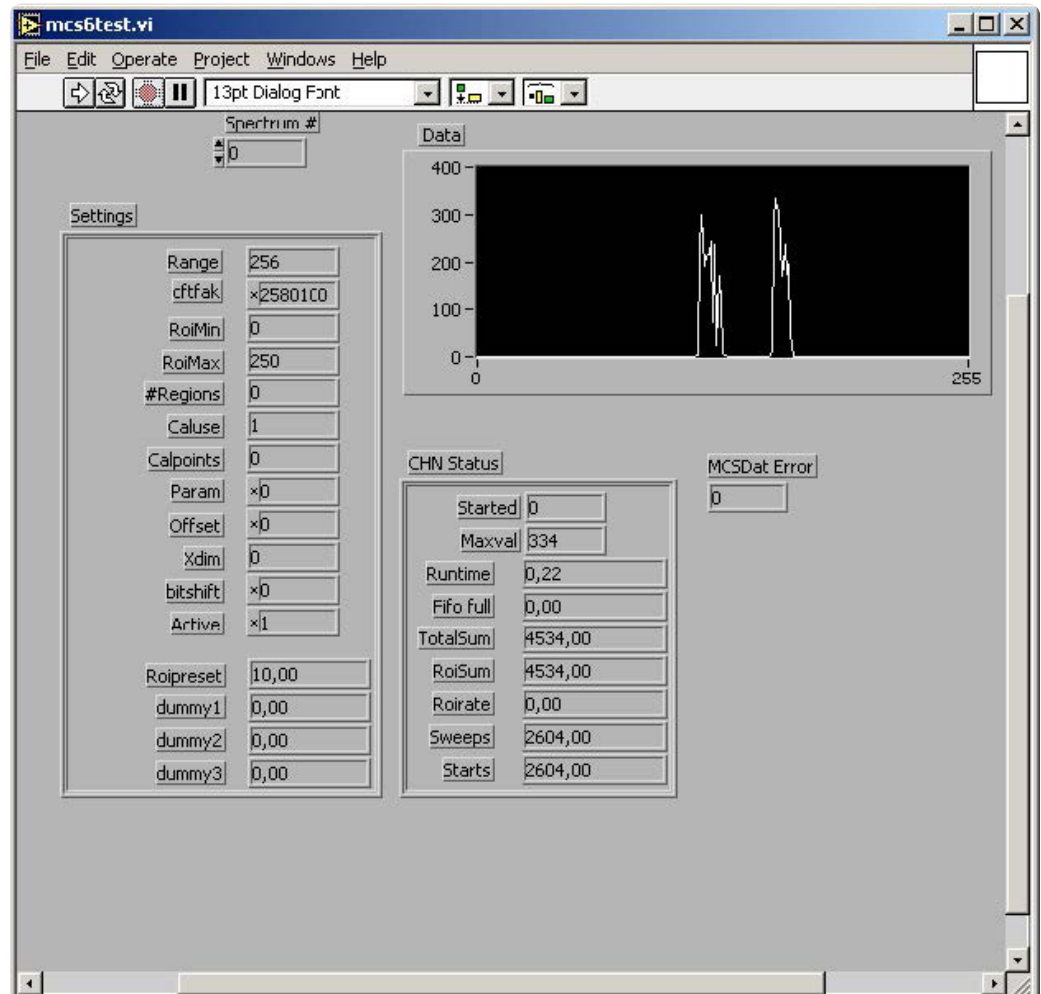


Here is the demo LabVIEW application for the access to MCS6A data



Features

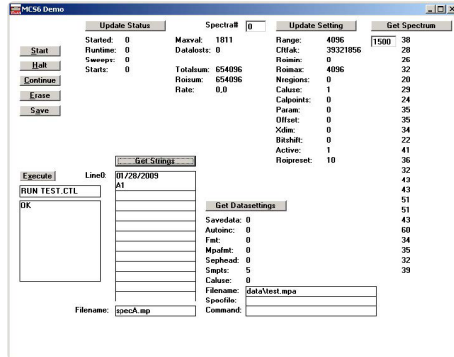
- MS-Windows based customer-specific user interfaces can be easily made using supplied documentation, libraries and examples
- Example programs in Visual Basic, VB2008, C and Delphi and Matlab
- Example LabVIEW application and library containing basic LabVIEW VI's
- Automatic execution through MACRO commands
- Local Area TCP/IP Network support for remote control via optional External Control software

Description

The 32 bit and native 64 bit MPANT software for the Multi-Input Multiscaler System MCS6A consists of a hardware-dependent server program with DLL and a general graphics program that controls the hardware via the DLL. Any other Windows application can also control the hardware via the DLL. To support the programming of such customer-specific user interfaces, as an option we deliver documentation such as sourcecode and example programs for Visual Basic, Delphi and LabVIEW.

The software includes the complete sourcecode of the DMCS6.DLL that controls the hardware via the server program.

For LabVIEW a demo program and a library containing some basic VI's are delivered.



The Visual Basic Demo program

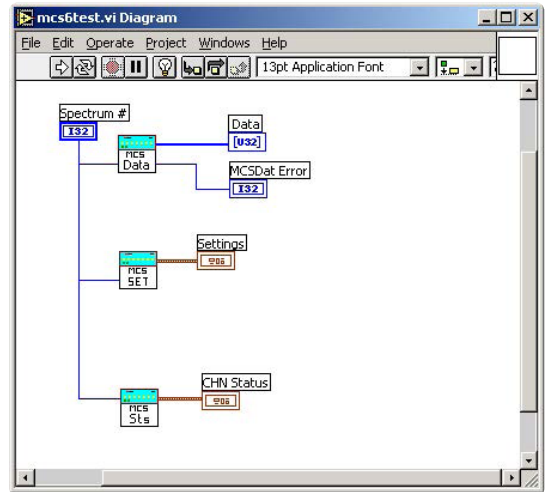
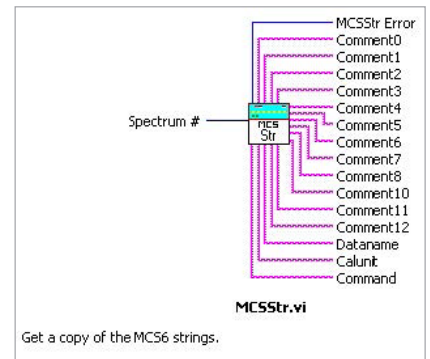
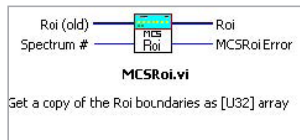
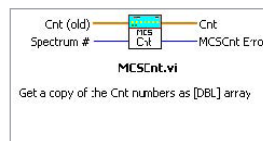
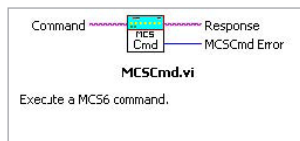


Diagram of the LabVIEW Demo program

Here are some VI's contained in the VI library MCS6.LLB:



The following MCS6A additional software products are presently available:

Order Information		
Model	Description	Order No.
MCS6EXTCTL	External Control Software, Commands via TCP/IP and/or RS232	MP3S03
MCS6DLL32	DLL for LabVIEW / Visual Basic	MCS6S1