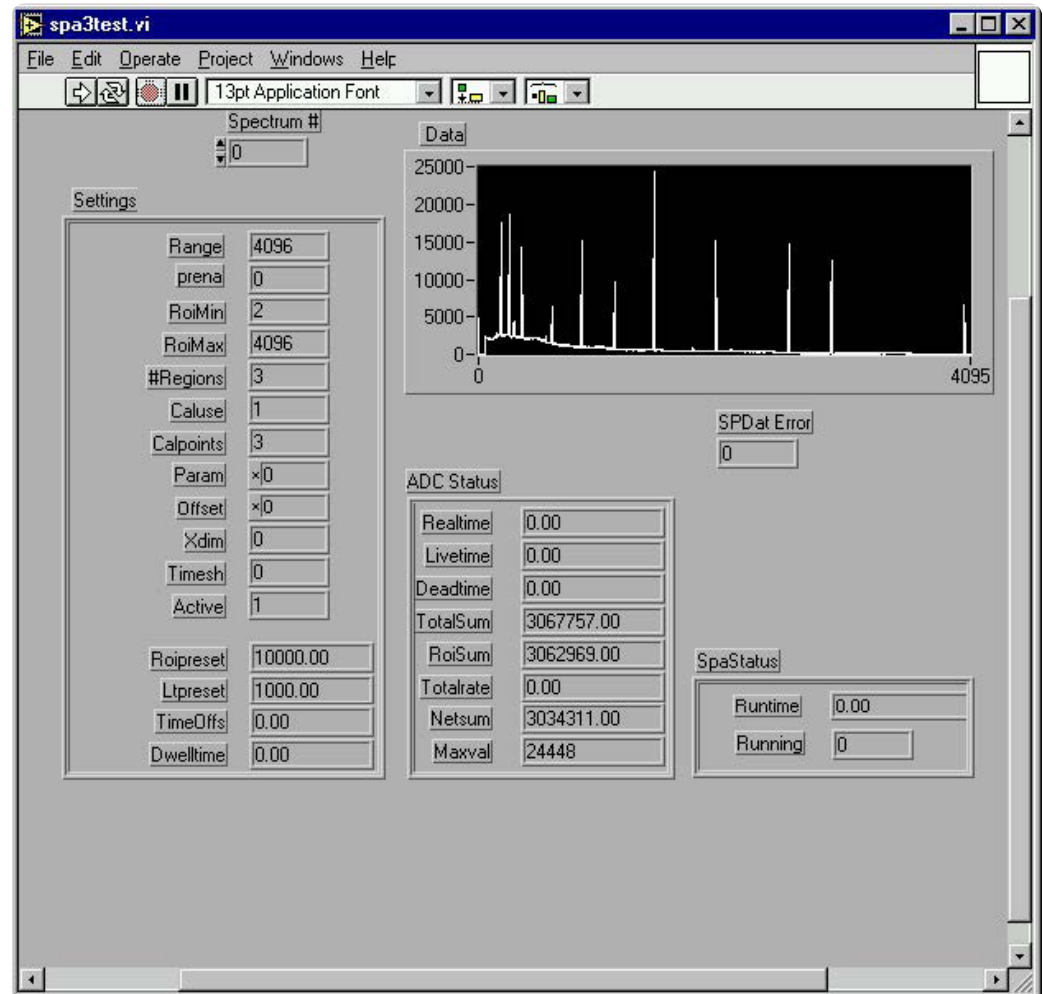


Here is the demo LabVIEW application for the access to SPA-3 data



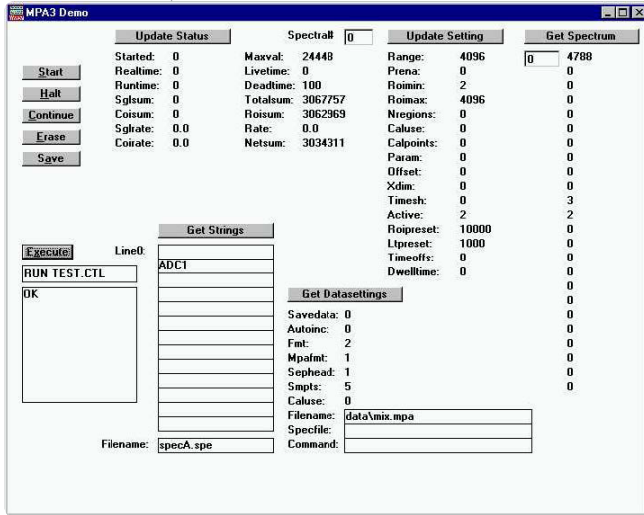
Features

- MS-Windows based customer-specific user interfaces can be easily made using supplied documentation, libraries and examples
- Example programs in Visual Basic and Delphi
- Example LabVIEW application and library containing basic LabVIEW VI's
- Automatic execution through MACRO commands
- Local Area TCP/IP Network support for remote control via optional SPA-3 Control software

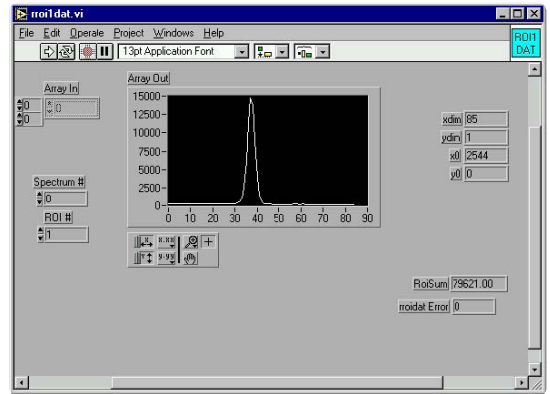
Description

The 32- and 64-bit MPANT software for the Multi-Input Multichannel Analyzer System SPA-3 consists of a hardware-dependent server program with DLL and a general graphics program that controls the hardware via the DLL. Any other Windows application can also control the hardware via the DLL. To support the programming of such customer-specific user interfaces, as an option we deliver documentation such as sourcecode and example programs for Visual Basic, Delphi and LabVIEW. The software includes the complete sourcecode of the DSPA3.DLL that controls the hardware via the server program.

For LabVIEW a demo program and a library containing some basic VI's are delivered.



The Visual Basic Demo program



Access to ROI data with LabVIEW

Here are some VI's contained in the VI library SPA3.LLB:

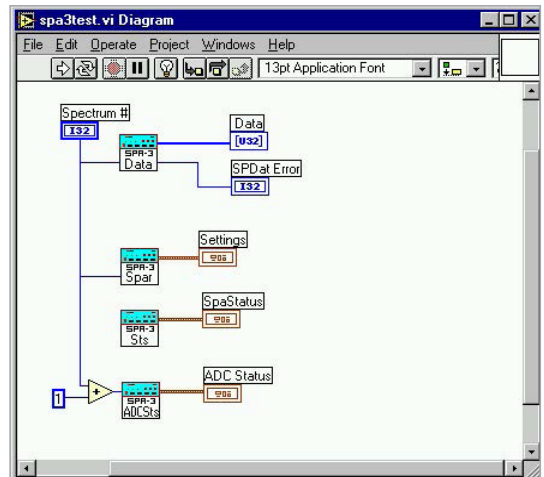
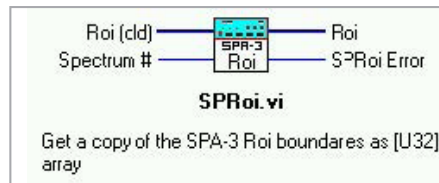
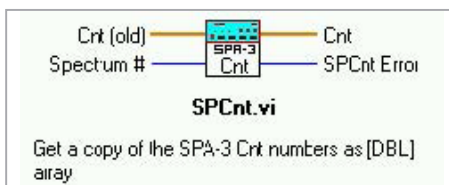
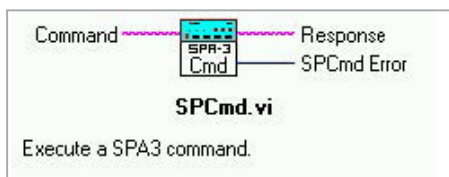
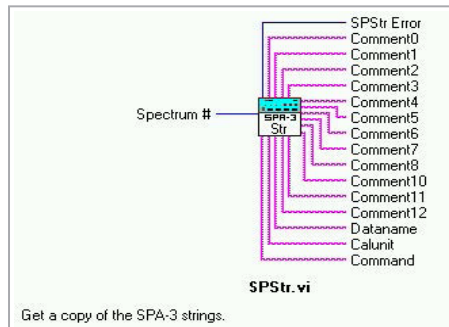


Diagram of the LabVIEW Demo program

The following SPA-3 additional software products are presently available:

Order Information		
Model	Description	Order No.
SPA-3RPlay	Replay program for off-line reconstruction of spectra from listmode	SP3S02
SPA-3RPlayEx	Replay program, runs on computer without SPA3 system	SP3S04
SPA-3EXTCTL	External Control Software, Commands via TCP/IP and/or RS232	SP3S03
SPA3_NTDDL	DLL for LabVIEW / Visual Basic	SP3S80