

MCDLAN - MCDWIN Remote Control Program for RS232C and TCP/IP



Features:

- DLL to control MCDWIN via a serial RS232 port. Commands can be sent using any terminal program, for example the MTTY.EXE from the TTY subdirectory on the installation diskette
- Remote Control from any computer via TCP/IP net using the Remote-shell daemon program mcwnet.exe
- Available for all Multichannel Analyzers with 32 bit MCDWIN software: MCA-3 Series , P7882, MCD4LAP, P7887 and P7888 Series TOF
- Automatic execution through MACRO commands
- Commands and Responses can be traced in the window of the mcwnet program

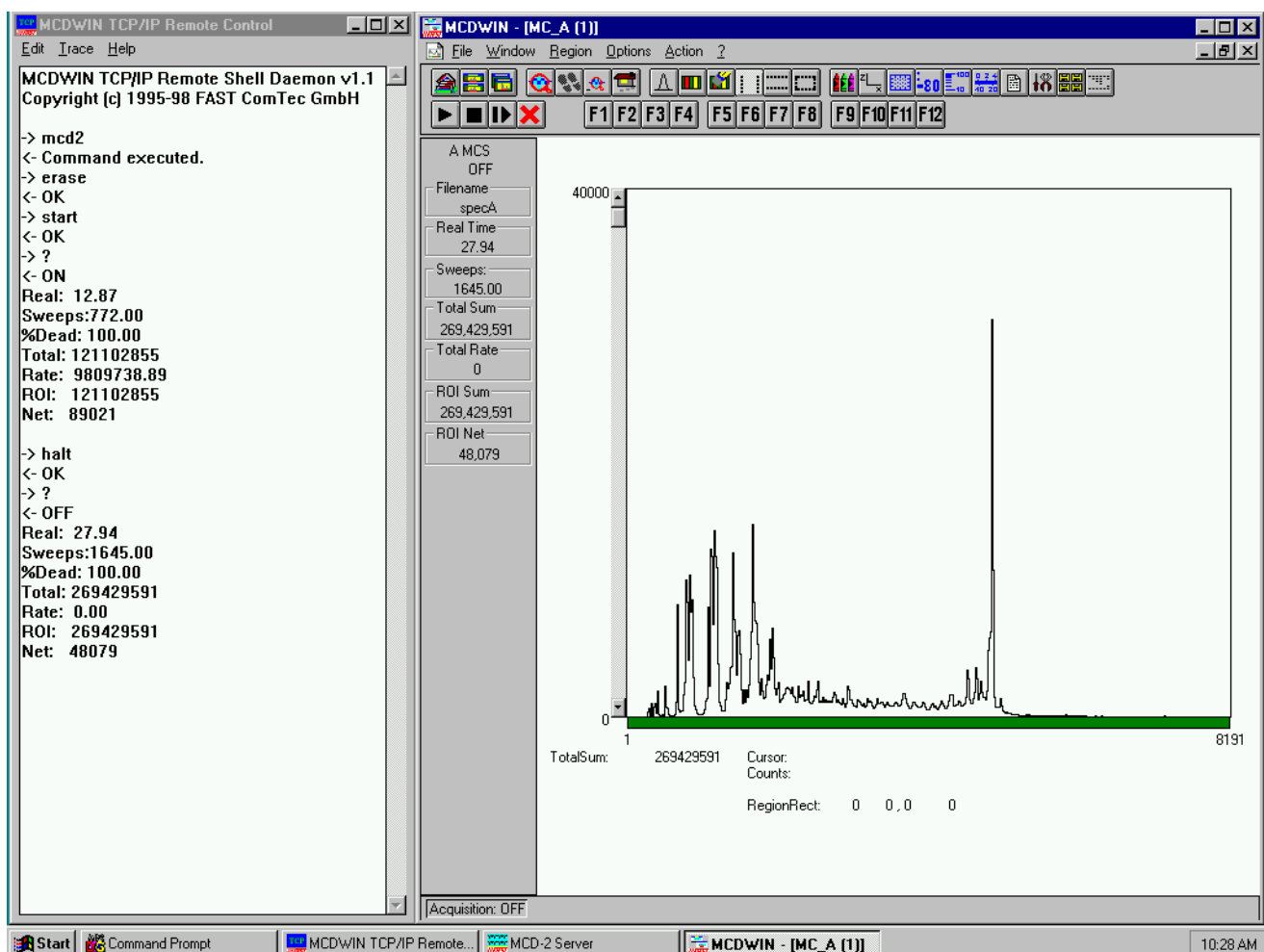
Description:

Remote control from any computer using RS232 is

possible with the delivered COMCTL.DLL by connecting both computers with a Nullmodem cable on a COM port or a modem connection.

Remote Control from any computer via TCP/IP net by using the Remote-shell daemon program mcwnet.exe. This is a program which accepts commands via TCP/IP from a remote machine and executes it on the local machine. The syntax for a mcdwin command is: rsh machine_name command Example: to start type: rsh machine_name start to get the status of MC_A: rsh machine_name MC_A?

The syntax for a win command is: rsh machine_name @command Example: to start mca3.exe and mcdwin.exe: rsh machine_name @mca3 to start the Windows accessory calc: rsh machine_name @calc



MCDLAN Rev. 1 022004