

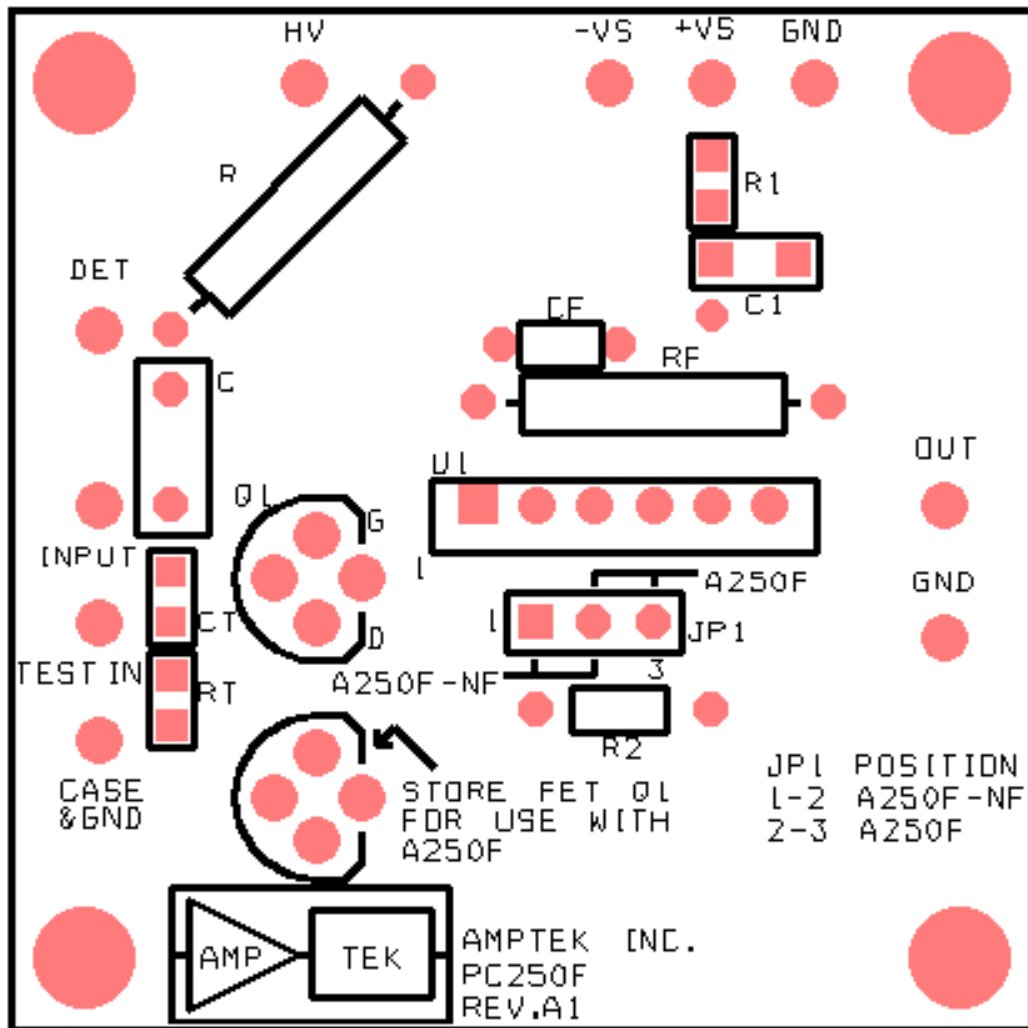
PC250F for the A250F or A250F/NF

Using the A250F with the PC250F: JP1 jumper must be placed in the 2-3 position and the FET must be placed in the STORE position. (refer to layout below)

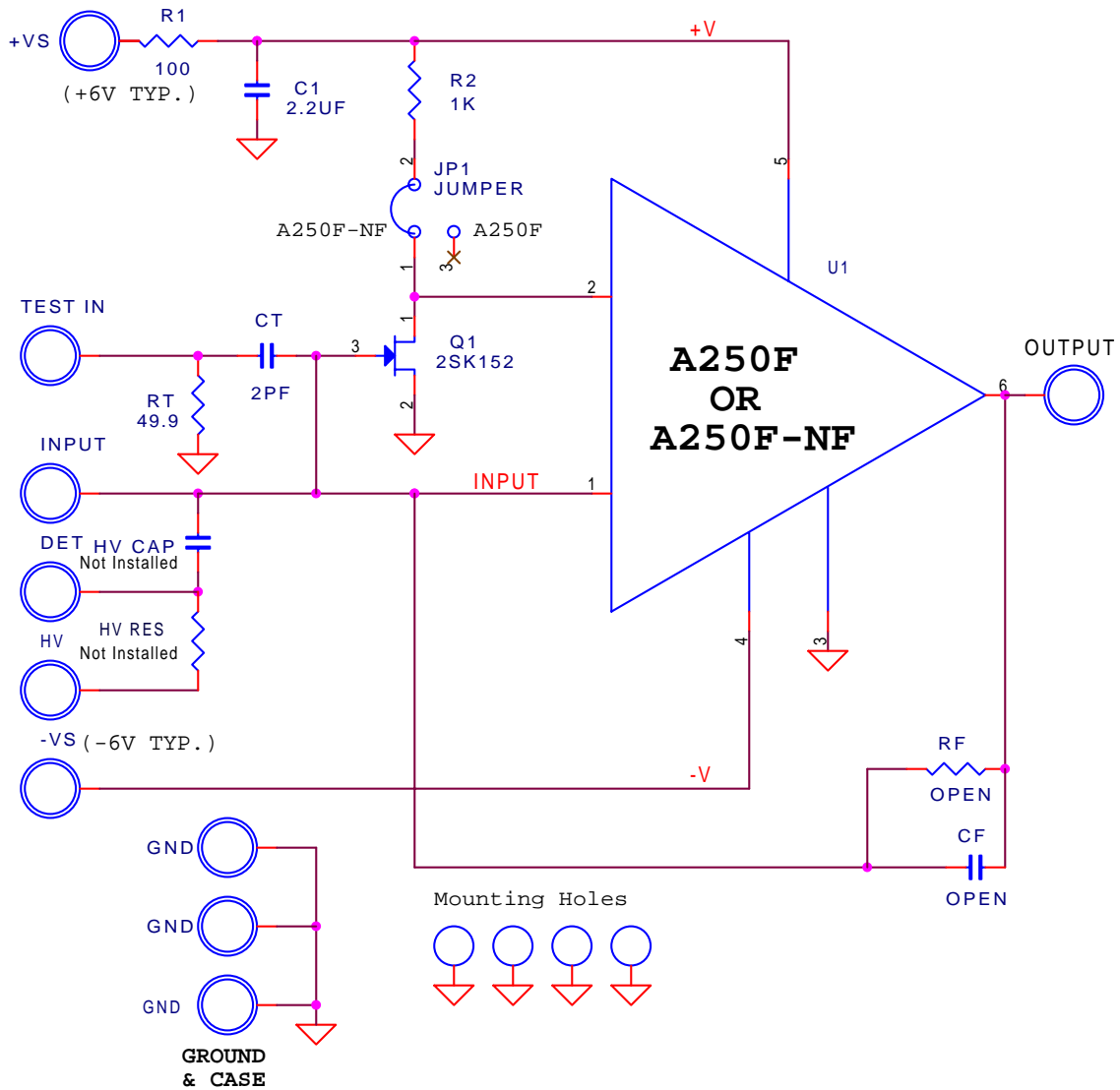
Using the A250F/NF with the PC250F: JP1 jumper must be placed in the 1-2 position and the FET must be placed in the ACTIVE Q1 position. (refer to layout below)

Refer to A250 Application Notes for testing.

PC250F Layout



PC250F Schematic



AMPTEK Inc.

6 De Angelo Drive, Bedford, MA 01730-2204
 Tele: +1 781-275-2242 Fax: +1 781-275-3470
 sales@amptek.com www.amptek.com