

TA1800B

1.8GHz Fast Pulse / Timing Preamp

User Manual

© copyright FAST ComTec GmbH
Grünwalder Weg 28a, D-82041 Oberhaching
Germany



Warranty

Equipment manufactured by FAST ComTec GmbH is warranted against defects in materials and workmanship for a period of twelve months from date of shipment, provided that the equipment has been used in a proper manner as detailed in the instructions manuals. During the warranty period, repairs or replacement will be made to FAST ComTec's discretion on a return to factory basis. The transportation costs, including insurance to FAST ComTec is the responsibility of the customer except for defects discovered within 30 days after receipt of the equipment, where shipping expense will be paid by FAST ComTec.

**Copyright © 1988 - 2009 FAST ComTec GmbH,
D-82041 Oberhaching, Germany
All rights reserved.**

This manual contains proprietary information; no part of it may be reproduced by any means without prior written permission of FAST ComTec, Grünwalder Weg 28a, D-82041 Oberhaching, Germany. Tel: ++49 89 66518050, FAX: ++49 89 66518040.

The information in this manual describes the hardware and the software as accurately as possible, but is subject to change without notice.

FAST ComTec GmbH, Grünwalder Weg 28a, D-82041 Oberhaching, Germany
Tel. +49(0)89-66518050, Geschäftsführer Dr. Wolfgang Wagner,
Handelsregister München HRB 73004

Table of Contents

1. Description	1-1
2. Specifications	2-1
2.1. Absolute maximum ratings.....	2-1
2.2. Technical data.....	2-1
2.3. Diagrams.....	2-2
2.4. Power requirements	2-4
2.5. Metal case.....	2-4
2.6. Accessories.....	2-4
2.7. Available options	2-4

Table of Figures

Fig. 1.1: Simplified schematic	1-1
Fig. 1.2: Output pulseform (15 mV in, 150 mV out).....	1-1
Fig. 2.1: Pulse response	2-2
Fig. 2.2: Output noise, Zsource = 0Ω	2-2
Fig. 2.3: Simulated voltage gain of all TAx amplifiers.....	2-3

1. Description

The TA1800B is a fast preamplifier with a small signal bandwidth of 1.8 GHz.

A unique feature for such high speed amplifiers is the DC coupling. DC coupling avoids count rate effects due to non DC balanced pulse trains and the corresponding charging of coupling capacitors.

Basically the TA1800B is a non inverting, closed loop, voltage mode, operational amplifier design.

Input offset adjustment is provided. Please be aware that the offset adjustment is source impedance dependent. For a 50 Ω source impedance the input related adjustment range is approximately ± 5 mV. For a high impedance source, e.g. a current mode driver, the range is approximately ± 10 mV.

WARNING: The amplifier has no thermal shutdown. Thus, be careful when connecting the output to loads less than 50 Ohms (**do not shorten the output!**).

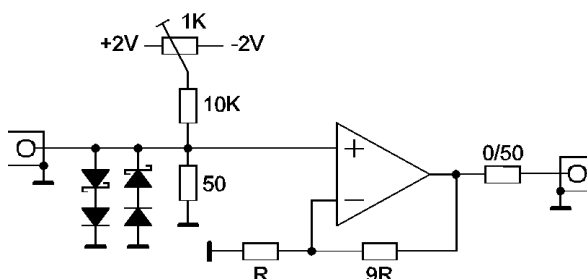


Fig. 1.1: Simplified schematic

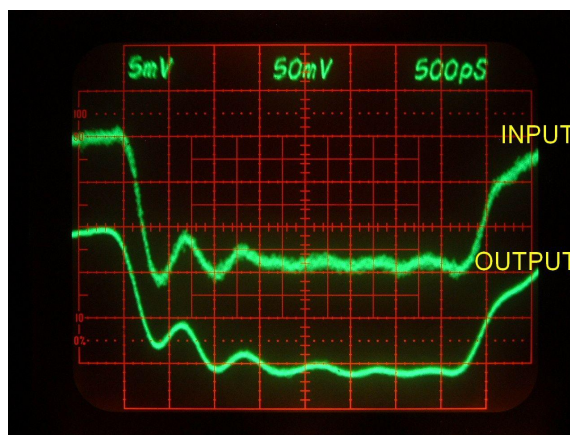


Fig. 1.2: Output pulseform (15 mV in, 150 mV out)

A test with a 30 mV_{pp} pulse and a FAST ComTec P7889 100 ps TOF analyzer showed an improvement of 10 ... 15% in peak width (FWHM) when a TA1800B was used for amplification of the small pulse signal.

Applications for the TA1800B are:

- Pre-amp for ultra fast detectors (MCP, PMT, ...)
- Oscilloscope and transient recorder pre-amp
- Photon-/Ion-counting
- Wideband signal processing

2. Specifications

2.1. Absolute maximum ratings

Supply:	(100 ms max.)	25 V
Signal input:		± 1.8 V
		± 140 mA
Input clamping:	(1 schottky + 1 silicon diode drop)	approx. ± 700 ... 900 mV
ESD rating:		3000 V HBM
		200 V MM

2.2. Technical data

Voltage gain:		non inverting, 20dB / x10
Input connector:		BNC, 50 Ohm, DC coupled
Output connector:		BNC, low impedance, DC coupled
		50 Ohm output feasible
Output voltage:		max. ± 1.3 V
Output current:		max. ± 150 mA
Bandwidth:	small signal ($V_{OUT} = 200mV_{RMS}$)	1800 MHz
	full power ($V_{OUT} = 2V_{PP}$)	1500 MHz
Slew rate:	(2 V step)	5500 V/ μ s
Input offset voltage:		max. 5.25 mV
		typ. ± 20 μ V/ $^{\circ}$ C
Input offset adjustment:	(50 Ω source)	$> \pm 5$ mV
	(high impedance source)	$> \pm 10$ mV
Input referred noise:		2.5 nV/ \sqrt{Hz}
		2.5 ¹ μ V _{RMS}
Noise figure:	(100MHz)	typ. 16 dB

¹ measured with a HP3455A true rms voltmeter (20 Hz ... 1 MHz)

2.3. Diagrams

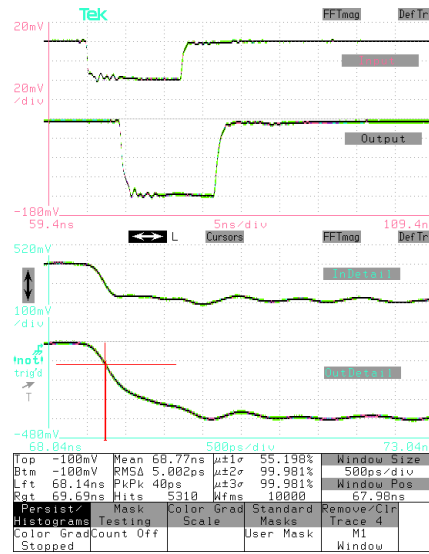


Fig. 2.1: Pulse response

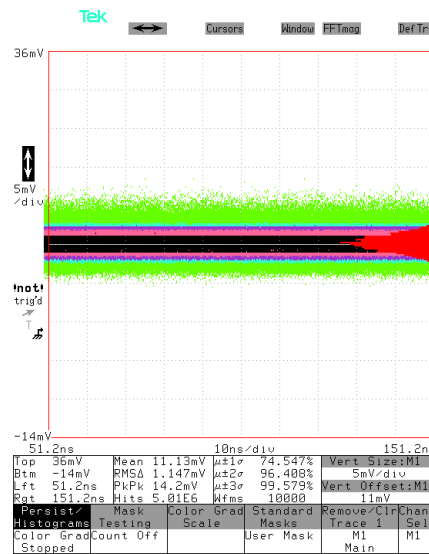


Fig. 2.2: Output noise, Zsource = 0 Ω

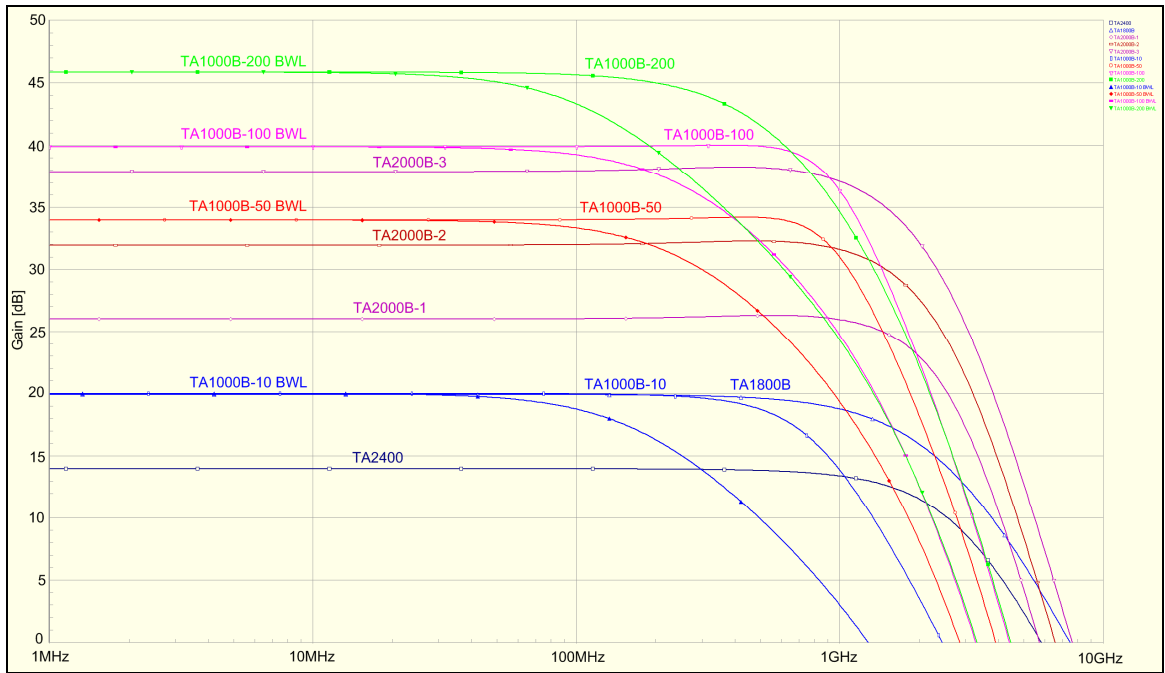


Fig. 2.3: Simulated voltage gain of all TAx amplifiers

2.4. Power requirements

Supply connectoer:2.1 mm center pin
Supply voltage:nominal +12 V _{DC}
voltage range:+10 ... +18 V _{DC}
false polarity protection
Supply power: 2.5 W

2.5. Metal case

Case material: extruded aluminium sheath, Al Mg Si 0.5
Lid material: die cast, GD-Al Si 12
Size: 65/101 x 60 x 35 mm
Weight: 124 g

2.6. Accessories

- External wall power supply (included)
- L-clips (order no. AB-WL) for wall-/screw-mounting (optional)

2.7. Available options

- **50 Ohm output impedance**
This improves the output signal quality since reflections from the target device (oscilloscope, multichannel analyzer, etc.) are well terminated at the TA1800B's output and do not travel many times back and forth over the cable. Thus, distortion of a subsequent pulse is largely avoided.
This option is particularly recommended when high pulse rates are expected.
The drawback, of course, is a reduction in the receiving amplitude at the target device by a factor of 2. Or, in other words, the effective voltage gain into a 50Ω load is reduced by a factor of 2 (-6 dB).
- **Input AC coupling**
An input AC coupling with 100nF can be ordered. This results in a lower frequency cut-off of approx. 32 kHz.