

## 2.2 Driver Installation

To install the driver, please start the device manager. You can do it by right-clicking the computer shortcut on the desktop and selecting "Manage" from the drop-down-menu, then "Device Manager". Another way is to select in the Start Menu Settings..Control Panel, then System..Device Manager.

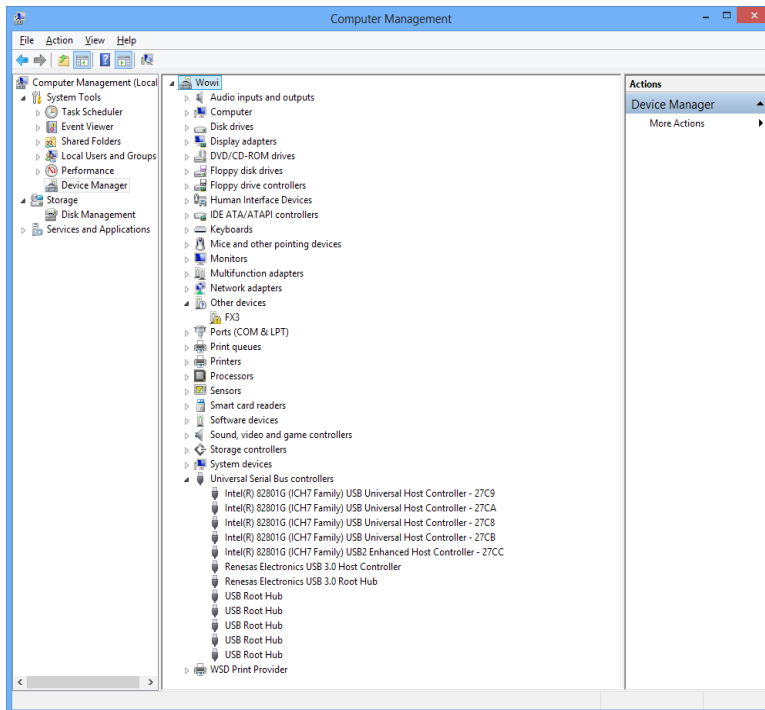


Fig. 2.1: Device Manager

The new device is displayed as "FX3" in a class "Other devices". Please right-click it and select "Update driver" from the drop-down menu.

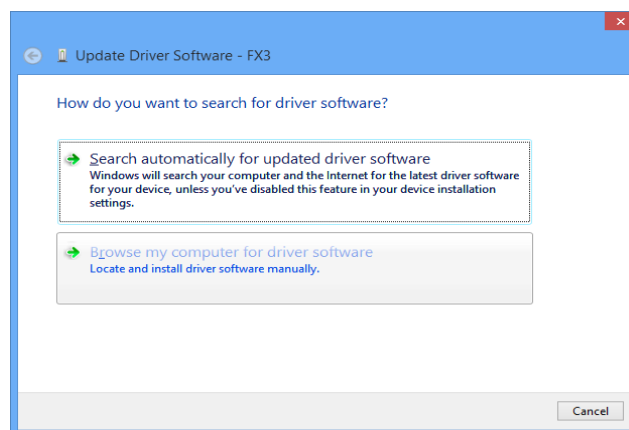


Fig. 2.2: Driver Installation

Windows offers to search automatically for updated driver software or browse the computer for the driver software. Don't try the automatic installation, it will probably not work. Select to browse manually for the driver and select for example for Windows 7 or 8 or 10 the driver\fastusb3 on the CD or Software stick. If you have an MCA4 that you want to operate with the same software, please install the driver in the driver\fastusb2 folder.

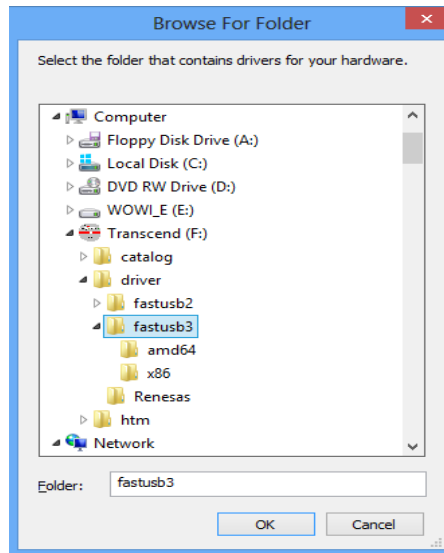


Fig. 2.3: Choosing the right folder

Please don't go deeper into the folder structure, the processor type (x86, amd64, etc.) is found automatically. After pressing "OK" the driver installation will proceed. The device manager will then show a "FAST ComTec USB3 Device" in a class "libusb (WINUSB) devices" as shown in Fig. 2.4.

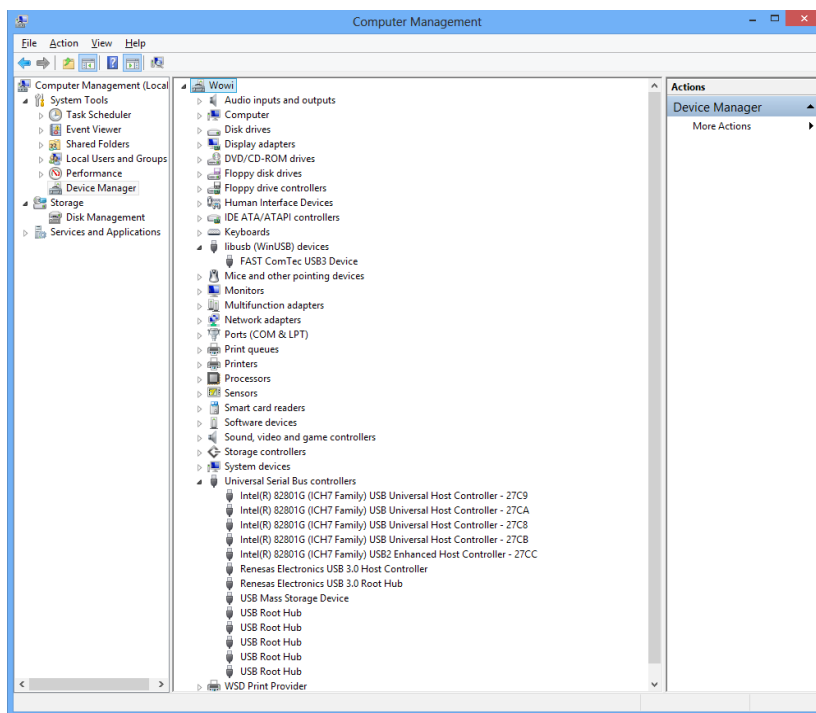


Fig. 2.4: Device Manager after successful driver installation

If there is an exclamation mark at the driver and there is an error message that the device could not start, please remove the power from the MCA4A device and reconnect it. If you don't see the device at all, it is possible that the USB3 driver must be updated. For a Renesas USB3 controller there is an update program on the software disk in the driver\Renesas folder.

Please check the Power Saving Options in the PC Settings. If the PC goes to sleep during a running acquisition and shuts the USB port down, the software will hang up. So it is recommended to disable automatic going to sleep in the energy options.