

2.2. Driver Installation

To install the driver, please start the device manager. You can do it by right-clicking the computer shortcut on the desktop and selecting “Manage” from the drop-down-menu, then “Device Manager”. Another way is to select in the Start Menu Settings..Control Panel, then System..Device Manager.

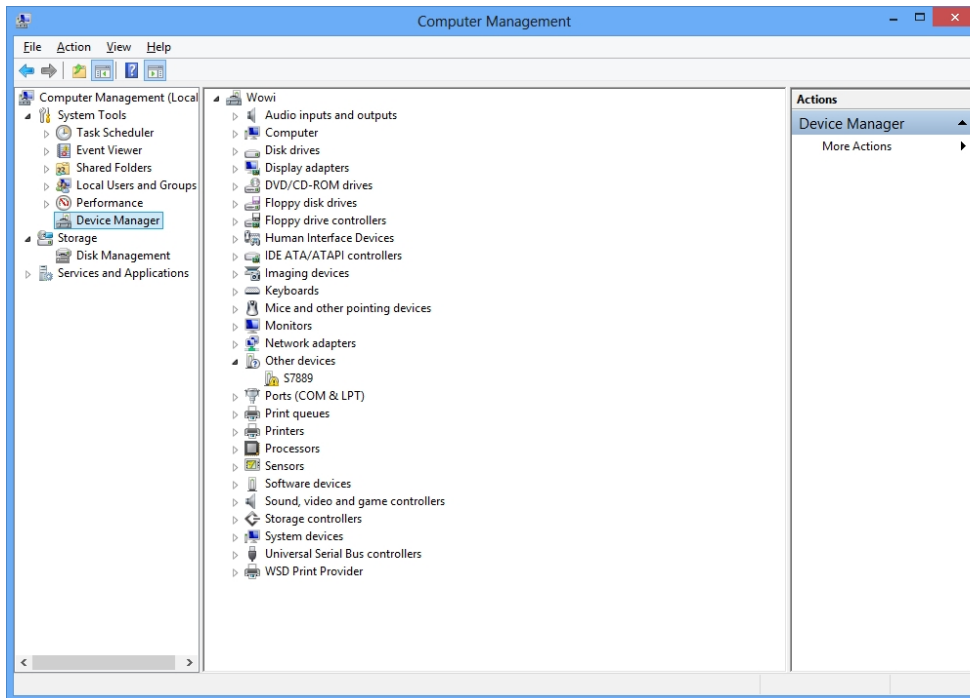


Fig. 2.1: Device manager

Connect the MCS6A and the power. The new device is displayed as “S7889” in a class “Other devices”. Please right-click it and select “Update driver” from the drop-down menu.

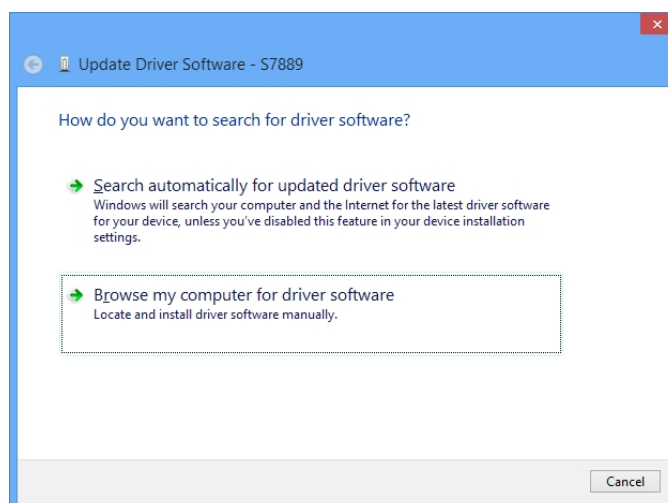


Fig. 2.2: Driver installation

Windows offers to search automatically for updated driver software or browse the computer for the driver software. Don't try the automatic installation, it will probably not work. Select to browse manually for the driver and select for example for Windows 7 or 8 the wdm\win7 folder on the CD or Software stick.

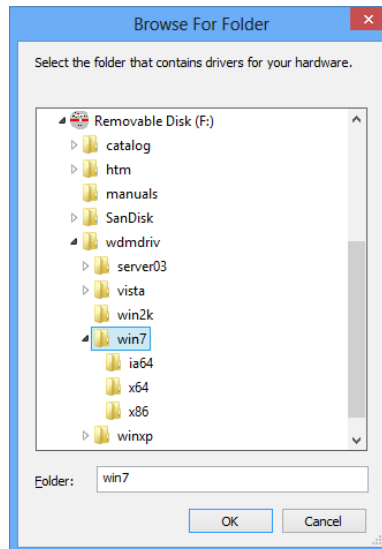


Fig. 2.3: Choosing the right folder

Please don't go deeper into the folder structure, the processor type (x86 , x64, etc.) is found automatically. After pressing "OK" the driver installation will proceed. The device manager will then show a "FAST ComTec MCS6 USB Driver" in a class "FAST ComTec USB Device" as shown in Fig. 2.4

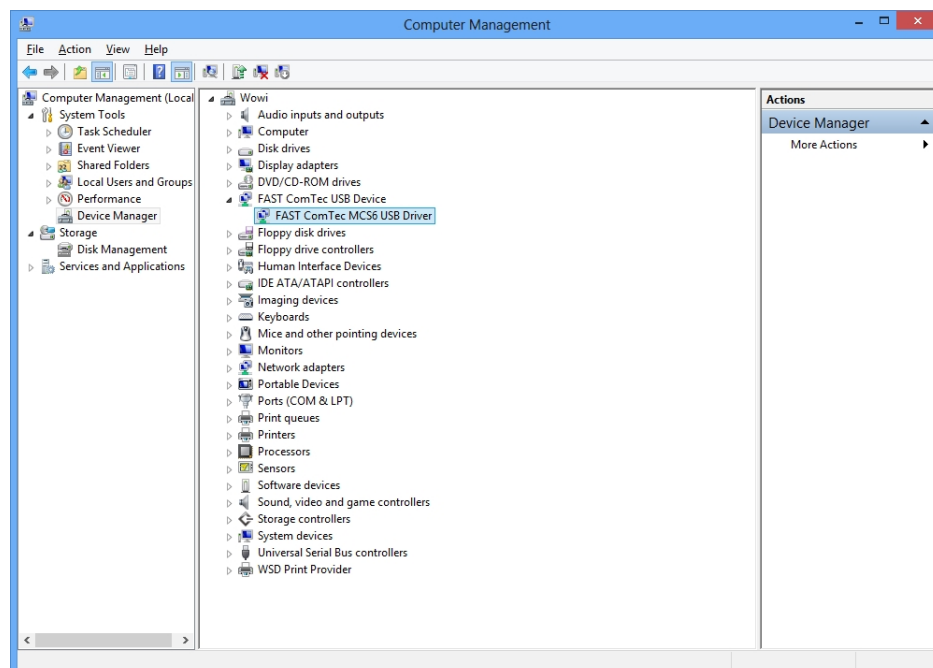


Fig. 2.4: Device Manager after successful driver installation