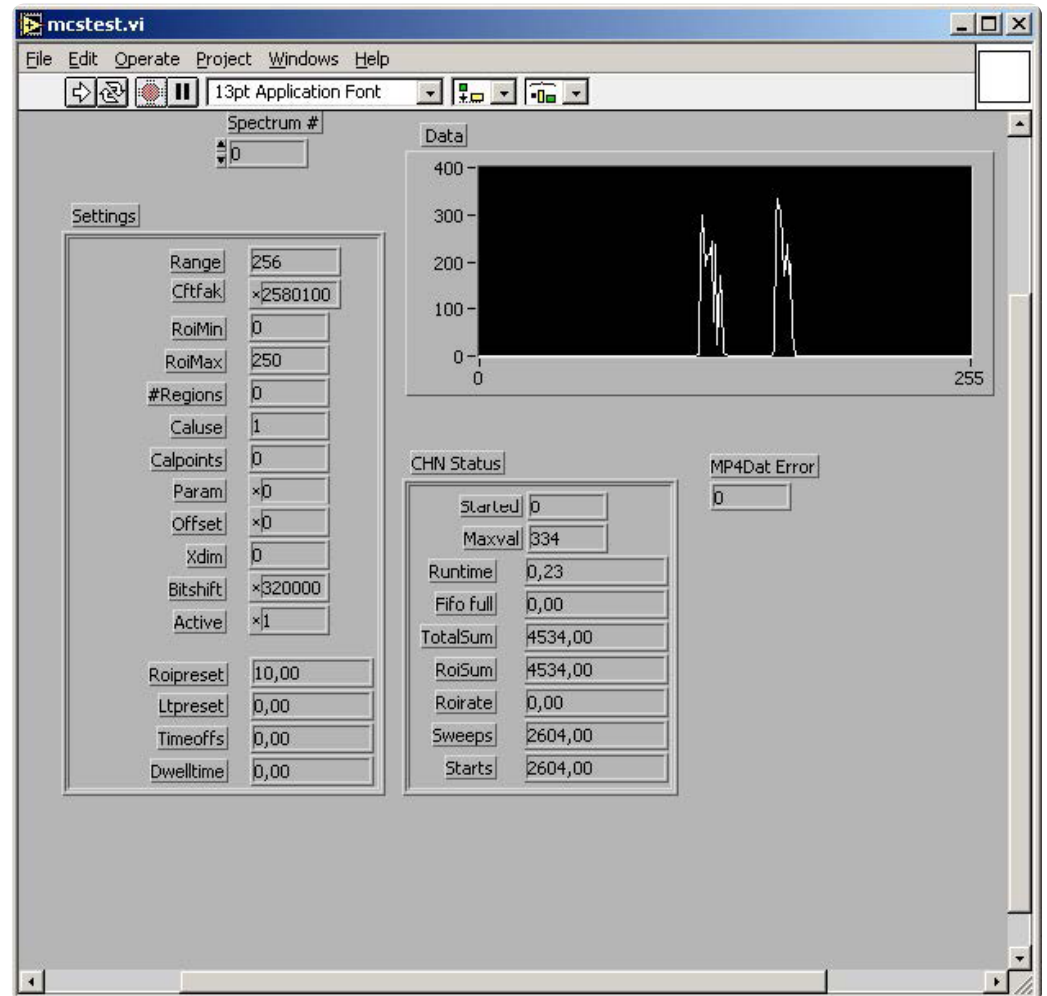


Here is the demo LabVIEW application for the access to MPA4T data



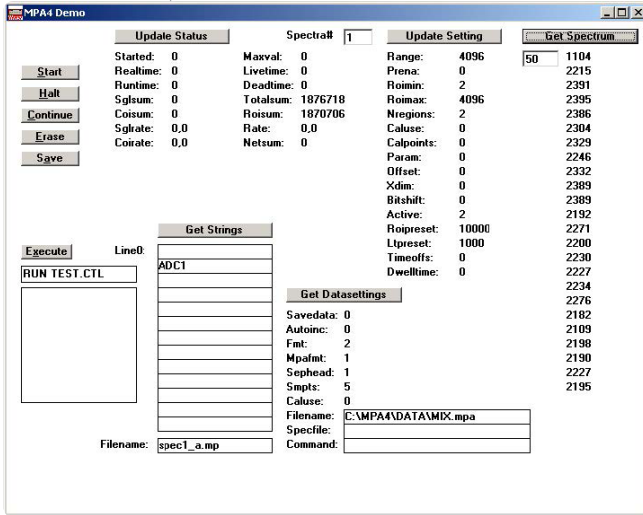
Features

- MS-Windows based customer-specific user interfaces can be easily made using supplied documentation, libraries and examples
- Example programs in Visual Basic, VB2008, C, Delphi and Matlab
- Example LabVIEW application and library containing basic LabVIEW VI's
- Automatic execution through MACRO commands
- Local Area TCP/IP Network support for remote control via optional External Control software

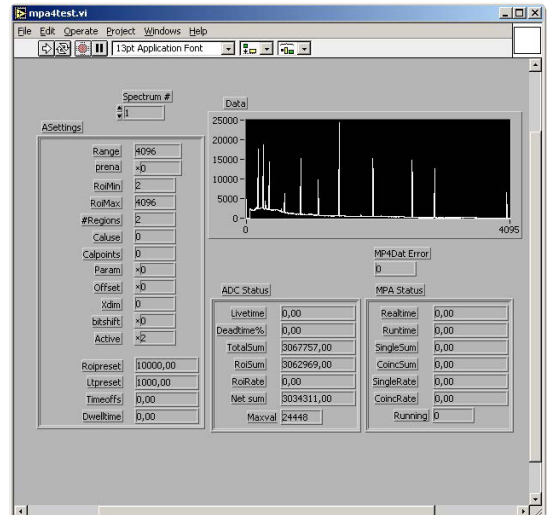
Description

The 32- and 64-bit MPANT software for the Multi-InputMultiscaler and Multiparameter System MPA4T consists of a hardware-dependent server program with DLL and a general graphics program that controls the hardware via the DLL. Any other Windows application can also control the hardware via the DLL. To support the programming of such customer-specific user interfaces, as an option we deliver documentation such as sourcecode and example programs for Visual Basic, Delphi and LabVIEW. The software includes the complete sourcecode of the DMPA4.DLL that controls the hardware via the server program.

For LabVIEW a demo program and a library containing some basic VIs are delivered.

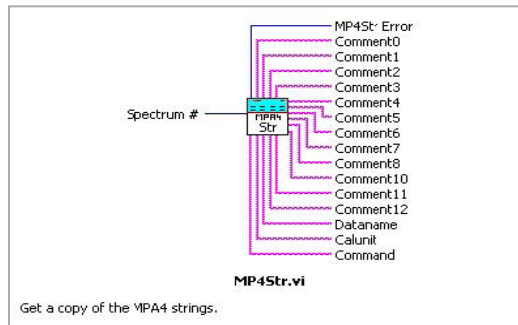


The Visual Basic Demo program

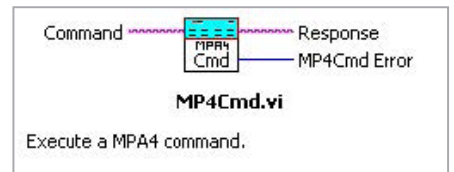


The LabVIEW Demo program

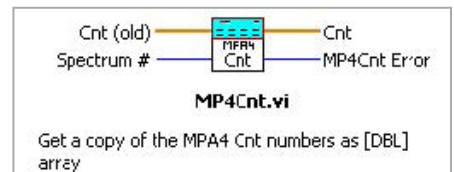
Here are some VIs contained in the VI library MPA4T.LLB:



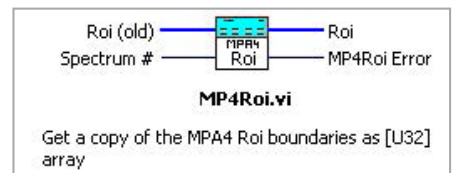
Get a copy of the MPA4 strings.



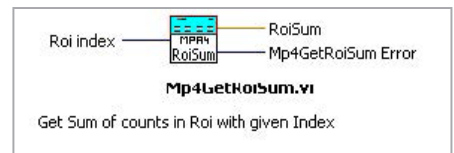
Execute a MPA4 command.



Get a copy of the MPA4 Cnt numbers as [DBL] array



Get a copy of the MPA4 Roi boundaries as [U32] array



Get Sum of counts in Roi with given Index

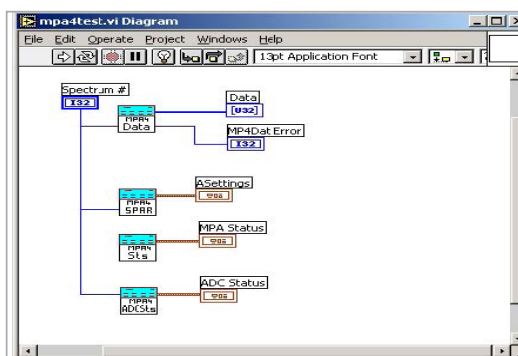


Diagram of the LabVIEW Demo program

The following MPA4T additional software products are presently available:

Order Information		
Model	Description	Order No.
MPA4Rplay	Replay program for off-line reconstruction of spectra from listmode	MPA4S5
MPA4RplayEx	Replay program, runs on computer without MPA4 system, Dongle	MPA4S6
MPA4Rplay+Ex	Replay program, Dongle + int.	MPA4S7
MPA4TDLL32	DLL for LabVIEW / Visual Basic	MPA4S3