

MPA-3 External Control Program for RS232C and TCP/IP



Features:

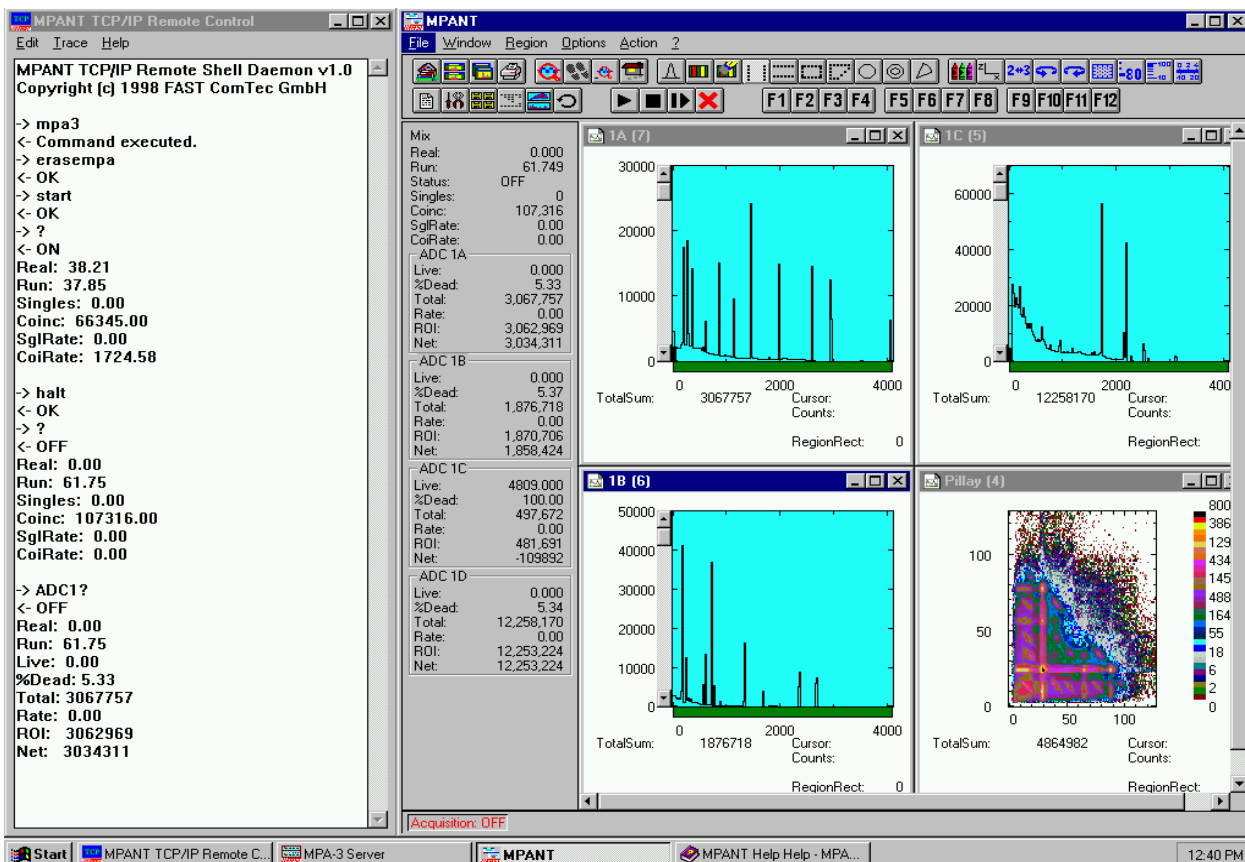
- DLL to control MPANT via serial RS232 port. Commands can be sent using any terminal program, for example the MTTY.EXE from the TTY subdirectory on the installation diskette.
- Remote Control from any computer via TCP/IP net using the Remote-shell daemon program mpa3net.exe.
- Automatic execution through MACRO commands.
- Commands and Responses can be traced in the window of the mpa3net program.

Description:

Remote control from any computer using RS232 is possible with the delivered MPA3COM.DLL by connecting both computers with a Nullmodem cable on a COM port or a modem connection.

Remote Control from any computer via TCP/IP net by using the Remote-shell daemon program mpa3net.exe. This is a program which accepts commands via TCP/IP from a remote machine and executes it on the local machine. The syntax for a mpant command is: rsh machine_name command
Example: to start type: rsh machine_name start
to get the status of ADC1: rsh machine_name ADC1?

The syntax for a win command is:
rsh machine_name @command
Example: to start mpa3.exe and mpant.exe:
rsh machine_name @mpa3
to start the Windows accessory calc:
rsh machine_name @calc



Nov. 1999