

32-bit DLL and VIs for LabVIEW and Visual Basic for MS-12

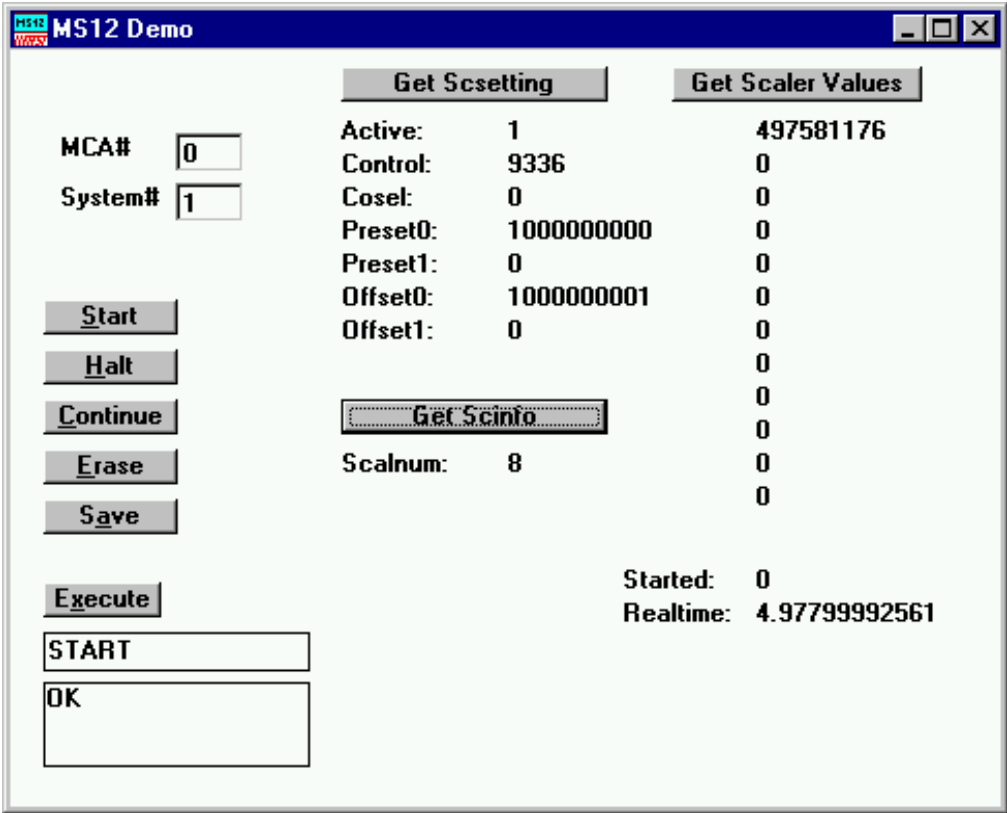
Features:

- MS-Windows based customer-specific user interfaces can be easily made using supplied documentation, libraries and examples
- Example program in Visual Basic
- Example LabVIEW application and library containing basic LabVIEW VI's
- Automatic execution through MACRO commands
- Sourcecode of DLL documents low-level hardware control and interfacing with the WMS12 Windows control program.

Description:

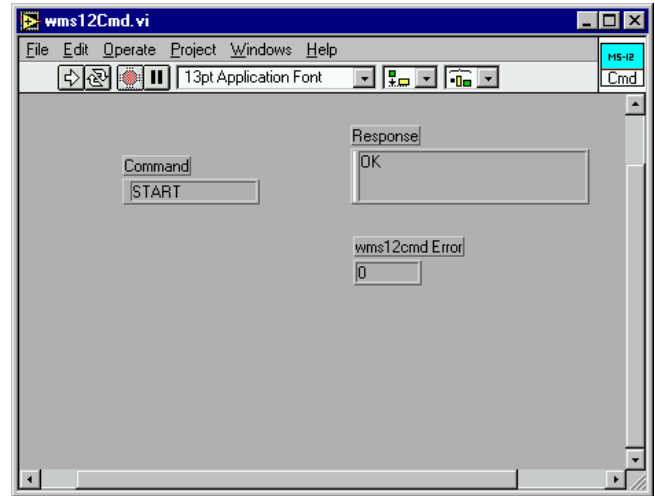
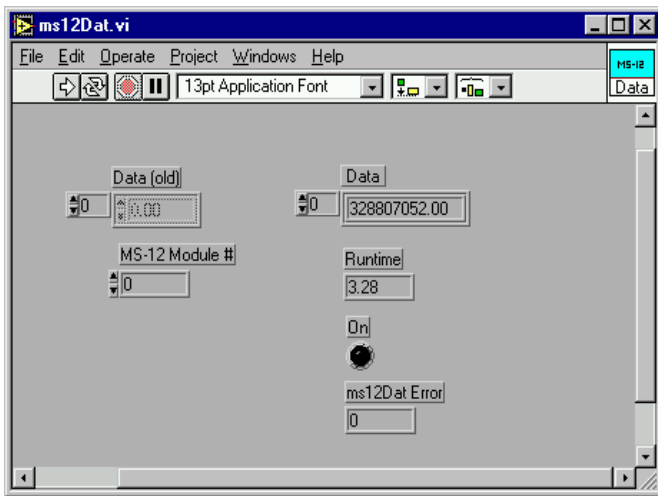
The Dynamic Link Library DMS12.DLL contains all low level functions to control the MS-12 hardware and provides a command interface to the WMS12 control program, that can be used by any Windows program (Windows 9x and Windows NT). The DLL can be used to send any of the WMS12 commands to the WMS12 control program. Any other Windows application can also control the hardware via the DLL. To support the programming of such customer-specific user interfaces, as an option we deliver documentation such as sourcecode and example programs for Visual Basic and LabVIEW. The software includes the complete sourcecode of the DMS12.DLL that controls the hardware. Also the source of the code interface nodes for LabVIEW is included.

Here is the Visual Basic Demo application:



The Visual Basic Demo program

LabVIEW VI's for the access to Scaler data and executing WMS12 commands:



Here are the VI's contained in the VI library MS12.LLB:

