



32-bit Control software HVC for High Voltage supplies via RS232

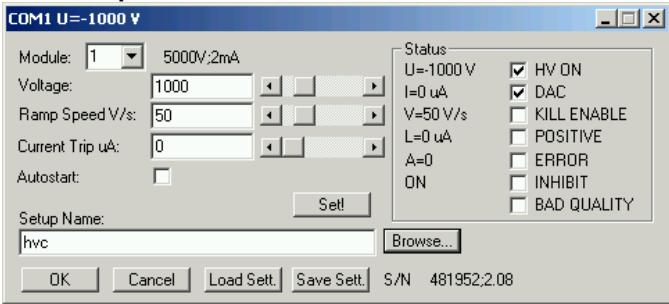
Features:

- MS-Windows stand-alone control program for the control of series SHQ, NHQ and THQ HV-supplies via RS232.
- Terminal program mode.
- Automatic execution through MACRO commands.
- DDE interface, example for LabVIEW.
- DLL interface for control via any Windows program.
- Using different COM ports several modules can be controlled simultaneously.
- Optional available DLL software contains Sourcecode of DLL, documents interfacing with the HVC Windows control program, includes Example programs in Visual Basic, Delphi and C and a Library containing basic LabVIEW VI's. MS-Windows based customer-specific user interfaces can be easily made using the supplied documentation, libraries and examples.

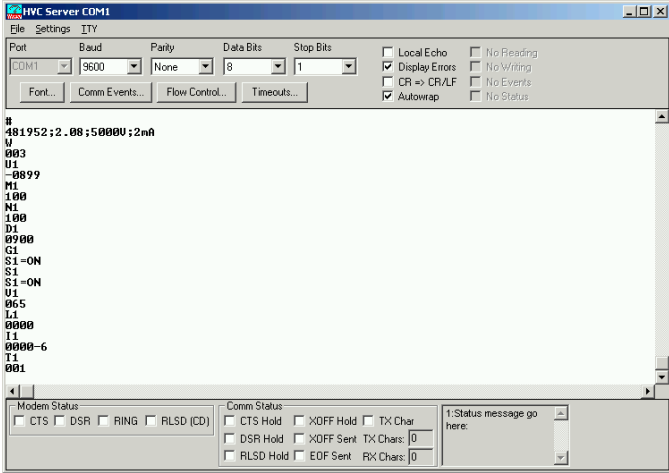
Description:

A stand-alone Windows program HVC.EXE allows to set all parameters and control the status of series SHQ, NHQ and THQ HV supplies via RS232. The Dynamic Link Library DHVC provides a command interface to the HVC control program, that can be used by any Windows program (Windows 9x, NT, 2000 and XP). The DLL can be used to send any of the HVC commands to the HVC control program. Any other Windows application can also control the hardware via the DLL. To support the programming of such customer-specific user interfaces, as an option we deliver documentation such as sourcecode and example programs for Visual Basic, Delphi and C and a LabVIEW VI Library. The optional software includes the complete sourcecode of the DHVC.DLL.

Here is the HVC application:



The HVC program, control and status window



HVC program, terminal mode

HVC Control software for HV supplies 01/2005



ComTec

GmbH · Grünwalder Weg 28a · D-82041 Oberhaching · Germany
Tel 49-(0)89-66 51 80 50 · FAX 49-(0)89-66 51 80 40 · <http://www.fastcomtec.com>

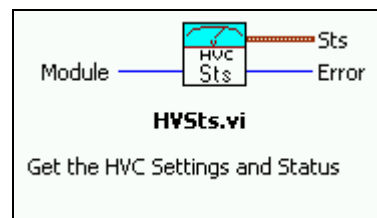
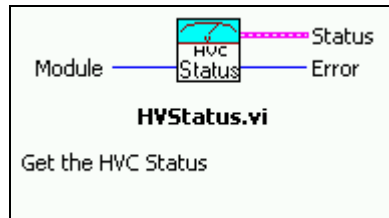
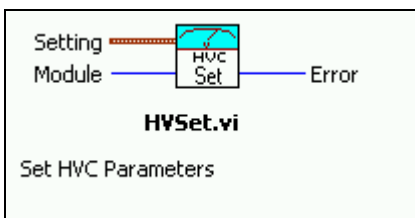
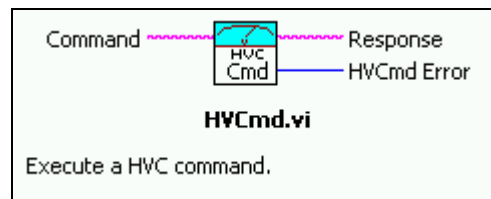
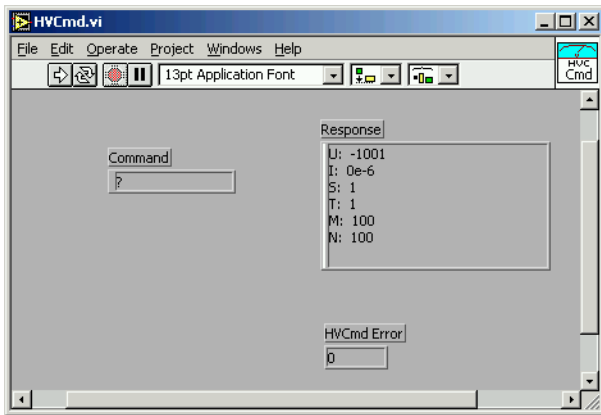
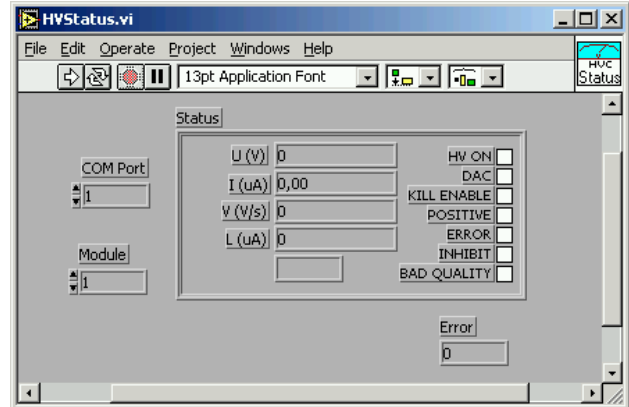
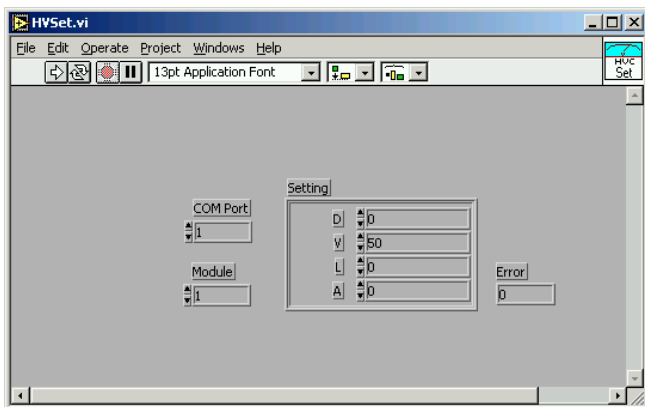
```

HVC.INI - Notepad
File Edit Format Help
;Set modules to number of HV modules in device (1 or 2)
modules=1
;
;default COM Port:
comport=1
;default Baudrate:
baudrate=9600
;
;The status is read every updatarate msec, if possible.
updatarate=2000
;between the following tags you may enter direct commands like v1=50
[DIRECT COMMANDS]
[END]

```

HVC.INI file

LabVIEW VI's for the access to Status and Settings and executing HVC commands:



The following software products for HV supplies are presently available:

Model	Description	Order no.
HVC	HVC control software of HV supplies via RS232 (basic SW)	HVIS100
HVCDLL32	DLL for HVC LabVIEW, VB (requires HVC)	HVIS101
ISEGLABV	Program for control of NHQ via CAN-BUS + CAN Controller	HVIO06